



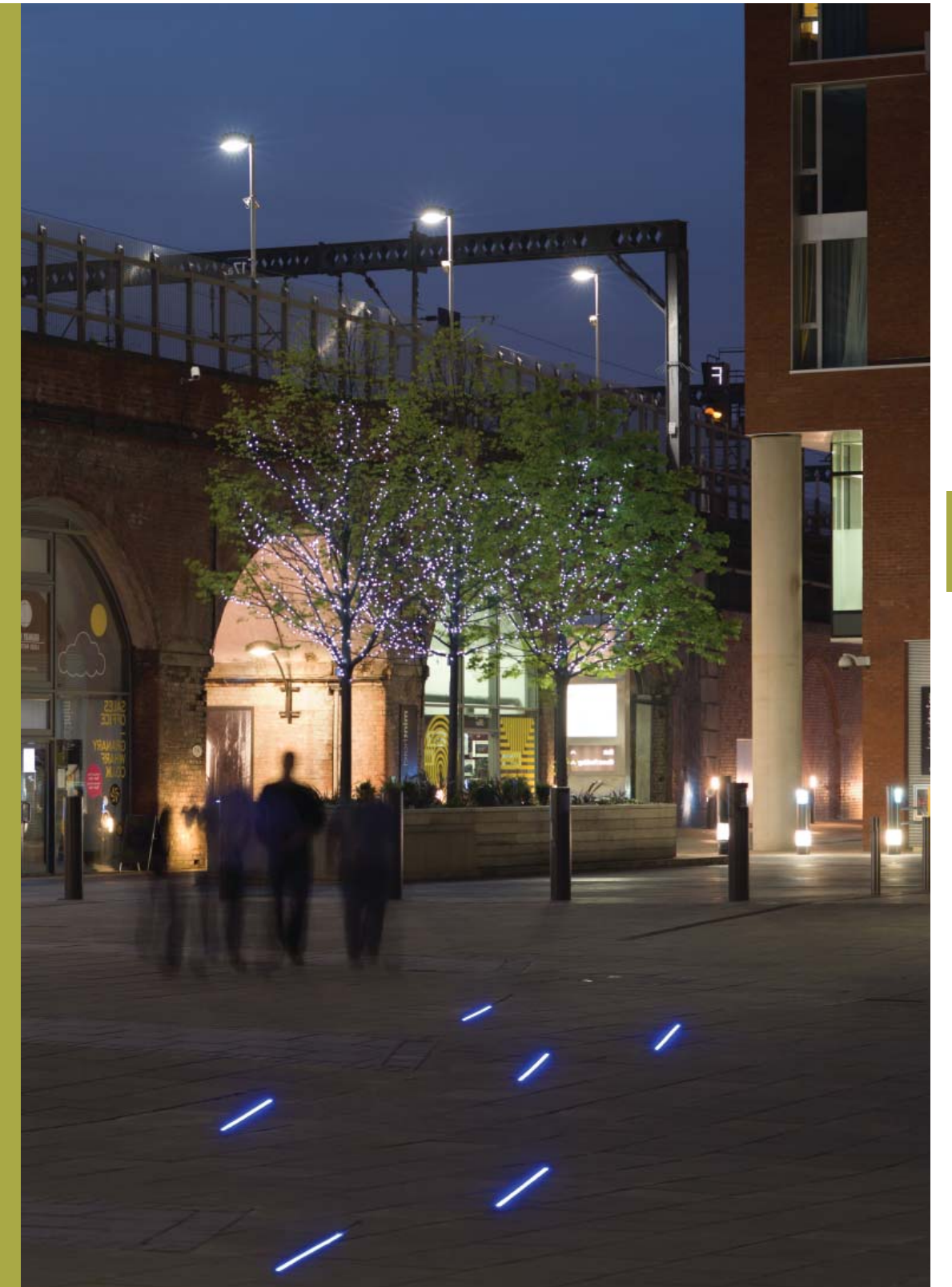
LED LINEAR & SYSTEMS
LUMINAIRES

advanced systems



XACOTO
TECHNICAL SPECIFICATION DATA

Strategic Lighting Group | Strategic Lighting (Europe) Limited | Narrow Lane End Works, 64 Worple Road, Epsom, Surrey KT18 7AG | England UK
Tel. +44 (0)845 241 4631 | Fax. +44 (0)845 241 4632 | Email. info@strategiclighting.com | www.strategiclighting.com



XACOTO

single colour & RGB - circuit controlled



3.5W **6W** Wattage - per linear metre single / RGB colour change

24V Voltage dc - direct current only

Gear PSU Remote

65 Lumens / Watt value - based on warm white

nm CRI - Index see RGB nm values

IP67 IP Rating Exterior

III Insulation Class 3 - SELV

IK 08 IK Vandal Rating

5J Impact Rating joules

3000Kg Stress Load Kg - Driver to 3 metric Tonnes - 30mph

1Kg Product Weight kilograms/unit -

ENEC compliance

CE mark

F - mark fire safe rating

Environmental Technology



Product Purpose & Meaning

- The XACOTO is a 30mm width inground paver marker continuum and is founded on its solid construction and ability to be mounted seamlessly with perfect uniformity.
- The name "XACOTO" [Sa-Coat-Oo] was a quirk name used from the first project at Schiphol International Airport - Amsterdam.

Product Summary

- Robust IK08 and high IP68 with IP67 plug & play connectors with high light transmission segmentation.
- Based on the latest highest bin quality OSRAM SMD TopLED's in strong mechanically protected solid polyurethane resin.
- Warm & Cool White, Single Monochromatic Colours in Royal Blue, Red, Green and Amber, plus full RGB colour change.
- Dimmable using most signal protocols.
- Wide smooth distributions.
- Professional system, ideal for straightline architecture.
- Using easy bulk 24Vdc remote PSU's.
- Suitable for connection to every 20 metre for monochromatic colours & 10 metre for RGB run lengths.
- Available in 0.4m, 1.0m & 2.0 metre standard lengths. Module configurable in any length but with lit sections configurable every 200mm. [max. shadow gap of 99mm]

Applications

- Straight line architectural details.
- Exterior and Interior ground work delineation.
- Ground Troughs & Channels.
- Under Glass Walls
- Straight run underbenches and with cast or ston walls

Performance

Lamp Type approx.0.1W mono / 0.2W RGB
 LED Qty 35 per metre [7 per 200mm section]
 Lamp Source OSRAM SMD Signal TopLED
 Lumen Output 33/58lms - Per Watt Warm/Cool White
 Lamp CRI see nm range for colours
 LED Life 20,000hrs plus.
 Optic Beams Wide 120°
 LED Colours Warm 3000K, Cool 6500K, Whites Red, Green, Blue, Amber RGB - Colour Change

Electrical Data

Voltage 24Vdc input
 Load Watt approx.3.5W mono / 6W RGB per metre
 Load Current 100mA
 Remote Gear 24Vdc Power Supply Unit [PSU]
 Configuration CV [Constant Voltage]
 PCB on board CC [current controller]
 Control Dimming & Control via Interface Output. [Interface required]
 Data Protocol(s) DALI, 0-10V & DMX 512



Colour Consistency : 1 MacAdam Ellipse <100K

IP68

IP67



Description

A professional OSRAM TopLED based linear straight in-ground paver marker with the latest SMD high output signalLED's. Ideal 30mm width section for continuous jointing abutment and seamless light transmission. Plug and link sections to 20 metres on monochromatic. Solid robust construction in durable polyengineering resin and marine grade stainless steel. Available in 3.5W or less per metre. Single monochromatic colours including warm & cool whites and 6W full colour RGB option. Made for quick & easy connection with IP67 screw thread joint connectors between peices. Supplied with solid stainless pre-install sleeve. Slide and lock system and packing peice possible. No joint made for direct abutment for maximum light transmission. Corner peices and bespoke lengths possible. Remote safe 24Vdc powering. Ideal for internal & external applications. Smooth seamless transmission and uniformity together with solid strength and urban durability.

Construction & Finishes

- Engineered polymer continuum in white opal moulded resin.
- Folded marine grade stainless steel body and sleeve. Extruded with PCB in-layed and sealed to IP67
- Standard End joints to IP65 or Cast Resin Joint to IP68.

Main Features

- Benefits long marker lengths of 20 metre runs with 1 power feed [10 metres for RGB]. [thereafter new parallel power joint connection required].
- Bulk 30 metre+ remote 24Vdc PSU powering.
- Easy quick Install with plug connectors.
- Dimming via any protocol language .
- Custom angles and joints.

Mounting

- Mounting is via pre-installed sleeve in ground detail.
- Slide & lock system in sleeve for easy use & install.
- Push & screw fit IP67 connectors for linking sections. Mono with Live [Red] & Neutral [Black] power feeds. RGB with 4 core where RGB acts as the -VE negative neutral terminal. [All cables in power, meaning dimming & load through an interface with PWM [pulse width modulation]

Connection Diagram 6.1 & 6.2

- Connection is for CV - Constant Voltage for use with remote 24Vdc PSU & dimming & RGB Interfaces. See Connection Diagrams page 124.

Standard Colours

- Warm White - 3000K - CRI = 90%
- Intmd White - 4000K - CRI = 85%
- Cool White - 6500K - CRI = 80%
- Royal Blue - 469nm
- Red - 617nm
- Green - 525nm
- Amber - 587nm

- RGB Colour Change

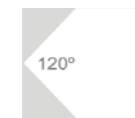


XACOTO

single colour & RGB - circuit controlled



Product Order Codes



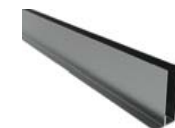
Xacoto - coding as supplied per 2 metre section. In-ground marker light with open LED wide to approx. 120° beam, opal profile viewing angle to near 180°. Available in LED colours below, with 3 versions white and powerful RGB option. For versions with other lengths see post-fix option codes below;

●	XAC.3.2M	Warm White	3000K	3.5W/m -109lm/m	No Optic - 120°
●	XAC.4.2M	Intern. White	4000K	3.5W/m -109lm/m	No Optic - 120°
●	XAC.6.2M	Cool White	6500K	2.2W/m -127lm/m	No Optic - 120°
●	XAC.B.2M	Blue	460nm	0.8W/m - 13lm/m	No Optic - 120°
●	XAC.R.2M	Red	620nm	3.3W/m - 36lm/m	No Optic - 120°
●	XAC.G.2M	Green	530nm	2.5W/m - 111lm/m	No Optic - 120°
●	XAC.A.2M	Amber	600nm	1.5W/m - 14lm/m	No Optic - 120°
●	XAC.RGB.2M	RGB	DMX	512 6W	No Optic - 120°

POST-FIX OPTION CODES

For codes with LENGTHS - 1.0 metre substitute postfix "2M" for "1M", for 400mm substitute postfix "2M" for "400" FOR CUSTOM LENGTHS - use postfix and length then consult with our technical sales team.

Accessories



Stainless Ground Sleeve

An exterior grade stainless steel housing box / sleeve for pre-cast or bedded in ground works.

XAC.GS.2M	Mono & RGB	Ground Sleeve	Length - 2.0 metre	c/w Lock & Slide
XAC.GS.1M	Mono & RGB	Ground Sleeve	Length - 1.0 metre	c/w Lock & Slide
XAC.GS.400	Mono & RGB	Ground Sleeve	Length - 400mm	c/w Lock & Slide



End Cap

End cap to finish end of run length on profile.

XAC.EC	Universal Part	End cap	Stainless Steel	316
---------------	----------------	---------	-----------------	-----



Power Feed

This is the main lead connector on to the system, supplied with special 'start' plug.

XAC.MON.10M	Mono	Connector	10 metre length	2-core
XAC.RGB.10M	RGB	Connector	10 metre length	4-core



Joint Connector

This is the joint connector on to the system, supplied with special 'IP67' connection plugs.

XAC.JC.200	Mono	Joint Connector	200mm length	2-core
XAC.JC.200	RGB	Joint Connector	200mm length	4-core
XAC.JC.1M	Mono	Joint Connector	1 metre length	2-core
XAC.JC.1M	RGB	Joint Connector	1 metre length	4-core



Split Connector

This is the 2-way split joint connector for connecting two Joint Connectors

XAC.SC.2W	Mono	Split Connector	2-Way T	2-core
XAC.SC.2W	RGB	Split Connector	2-Way T	4-core



XACATO
single colour & RGB - circuit controlled



140

141

LED LINEAR SYSTEMS

product pages start page 73

retail & leisure

LED LINEAR SYSTEMS

retail & leisure

product pages start page 105

NEON TYPE

MONO - 5W Page 133



NEON LEDLINE - mono

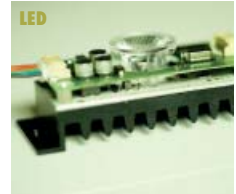
RGB - 5W-11W Page 133



NEONLEDLINE - RGB

LINKS & CHAINS

POWERLED Page 119



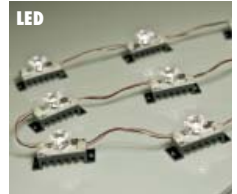
ARCHILED LINKS - Chaser

RGB - 5.3W Page 113



ARCHILED LINKS - RGB

MONO - 3W Page 107



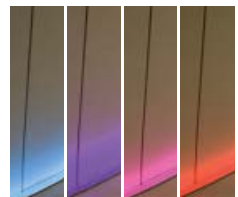
ARCHILED LINKS - mono

Page 120



MUSEUMS

Page 116



GROUND RECESSES

Page 114



ATRIA & STAIRWELLS

Page 104



FOOTBRIDGES

Page 108



FASCIAS

TUBULAR

Page 134 SIGNAL*1WPOWER



SCORRENTE

Page 103 LED - 20W/m



AMBIENTALE

FLEXIBLE CONTINUOUS

Page 123 3.5W MONO



STRIPIED FLEXI - mono

Page 123 6W - RGB



STRIPIED FLEXI - RGB

Page 129



SIDELED mono & RGB

Page 125



GLASS SHELVING

Page 130



BAR

Page 131



LANDSCAPE

Page 130



CEILING ALCOVES

Page 123



RGB COLOUR CHANGE

IN-GROUND MARKER

Page 139 3.5W MONO



XACOTO

Page 141 6W - RGB



AIRPORT FLOORING