



PENDANT & SUSPENSIONS
LUMINAIRES



advanced systems

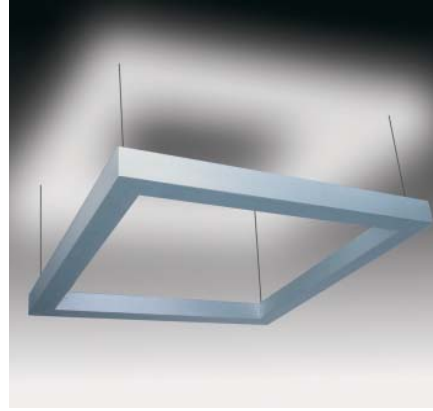


ELEGANTA
TECHNICAL SPECIFICATION DATA

ELEGANTA FRAME SERIES

fluorescent - dimmable

IP20



78



Energy Saving Technology



Green Energy Technology



Lamp Type Technology



Wattage - Unit multiple lamps [dimmable]



Voltage ac - alternating current only



Integral HF Ballast



Lumens / Watt value - based on 54W at 4450lms



CRI - Group Index value - 80 - 90%



IP Rating Standard Interior Only



Insulation Class - Functional Earth Required



Product Weight Kilograms/unit



ENEC compliance



CE mark



F - mark fire safe rating



Environmental Technology

Product Purpose & Meaning

- The Eleganta *frame series* of suspended luminaires is characterised by its modularity and minimal form.
- The name "Eleganta" [Elly-Gan-Ta] is derived from the English - "elegant" referring to its straight lines and simplicity.

Product Summary

- Optional direct or indirect suspended profile luminaire with soft frosted PC prismatic diffuser. [Opal optional].
- Slim low profile 50mm edge profile.
- Dimmable with all signal protocols.

Applications

- Feature lighting of large open spaces.
- Schools, libraries, conference suites.
- Ideal for showrooms & retail.

Performance

Lamp Type	14W - 80W 600mm/1500mm T5 G5
Lamp Qty	4 in framed array
Lamp Source	Philips, Osram or GE.
Lumen Output	refer to manufacturers data
Lamp CRI	> 90
Life	typically 20,000hrs
Optic Beams	90° [half peak]

Electrical Data

Voltage	230Vac mains
Load Watts	Variable
Cable Terminal	Yes
Gear	Integrated
Configuration	Mains Power
Dimming	Yes
Data Protocol	DALI, DSI digital or 0-10V analogue

Description

An elegant minimalistic slim 50mm profile suspended architectural luminaire in 'soft' frosted PC prismatic. Ideal for feature or ambient lighting in either indirect and/or direct lighting of large spaces. Made for modern fine-wire suspension. Available as either direct downlighting or indirect uplighting formats with variable size lamps in square or rectangular array shapes. Indirect wall version. Version with opal diffuser - see post-fix codes. Custom on request.

Construction & Finishes

Aluminium profile.
Standard finish in natural anodised Aluminium.
Diffuser in Polycarbonate.

Main Features

- Multiple lamp power for large volume spaces.
- Slim low profile to 50mm.
- Direct / Indirect options
- Aesthetic feature.

Mounting

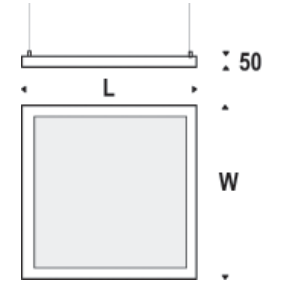
- Fine-wire suspension kit to 0.8 metres. c/w tool-free easy adjustability tension system. c/w ceiling power outlet.
- Integral gear
- 3 Core Connectors Live & Neutral power feeds - with functional Earth.

Connection Diagram A

- Connection is for standard main voltage. Gear is integral to frame.
- See Connection Diagram A - Page 324.

ELEGANTA FRAME SERIES

fluorescent - dimmable



79

Direct Product Codes :



Square

Direct downlight suspension of square shape with equal length sides and lamps

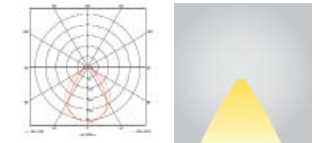
ELE.D414	WxL 670mm ²	4x14W T5 G5 - 4800lms	Square Direct Downlight
ELE.D424	WxL 670mm ²	4x24W T5 G5 - 7000lms	Square Direct Downlight
ELE.D428	WxL 1270mm ²	4x28W T5 G5 - 10400lms	Square Direct Downlight
ELE.D454	WxL 1270mm ²	4x54W T5 G5 - 8600lms	Square Direct Downlight



Rectangular

Direct downlight suspension of rectangular shape using 8W T5 lamps across the widths.

ELE.D228	W 410 x L 1270mm	2x28W T5 G5 - 5200lms	Rectangular Direct Down
ELE.D254	W 410 x L 1270mm	2x54W T5 G5 - 7000lms	Rectangular Direct Down
ELE.D235	W 410 x L 1570mm	2x35W T5 G5 - 6600lms	Rectangular Direct Down
ELE.D280	W 410 x L 1570mm ²	2x80W T5 G5 - 8600lms	Rectangular Direct Down



Indirect Uplight Codes :



Square

Indirect uplight suspension of square shape with equal length sides and lamps

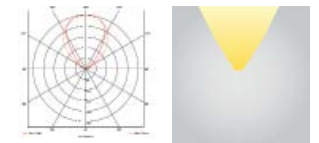
ELE.ID414	WxL 670mm ²	4x14W T5 G5 - 4800lms	Square Direct Downlight
ELE.ID424	WxL 670mm ²	4x24W T5 G5 - 7000lms	Square Direct Downlight
ELE.ID428	WxL 1270mm ²	4x28W T5 G5 - 10400lms	Square Direct Downlight
ELE.ID454	WxL 1270mm ²	4x54W T5 G5 - 17800lms	Square Direct Downlight



Rectangular

Indirect uplight suspension of rectangular shape using 8W T5 lamps across the widths.

ELE.ID228	W 410 x L 1270mm	2x28W T5 G5 - 5200lms	Rectangular Direct Down
ELE.ID254	W 410 x L 1270mm	2x54W T5 G5 - 8900lms	Rectangular Direct Down
ELE.ID235	W 410 x L 1570mm	2x35W T5 G5 - 6600lms	Rectangular Direct Down
ELE.ID280	W 410 x L 1570mm ²	2x80W T5 G5 - 12300lms	Rectangular Direct Down



Wall Indirect Codes :



Wall - Indirect Square

Indirect wall light of square shape with equal length sides and lamps

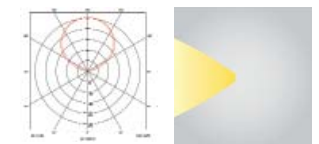
ELE.W414	WxL 670mm ²	4x14W T5 G5 - 4800lms	Square Indirect Wall
ELE.W424	WxL 670mm ²	4x24W T5 G5 - 7000lms	Square Indirect Wall
ELE.W428	WxL 1270mm ²	4x28W T5 G5 - 10400lms	Square Indirect Wall
ELE.W454	WxL 1270mm ²	4x54W T5 G5 - 12300lms	Square Indirect Wall



Wall - Indirect Rectangular

Indirect wall light of rectangular shape using 8W T5 lamps across the widths.

ELE.W214	W 410 x L 670mm	2x14W T5 G5 - 2400lms	Rectangular Indirect Wall
ELE.W224	W 410 x L 670mm	2x24W T5 G5 - 3500lms	Rectangular Indirect Wall
ELE.W228	W 410 x L 1270mm	2x28W T5 G5 - 5200lms	Rectangular Indirect Wall
ELE.W254	W 410 x L 1270mm	2x54W T5 G5 - 8900lms	Rectangular Indirect Wall



POST-FIX CODES

For codes with

DIMMING - HF gear defaults for HFR dimming by DALI ,DSI or 1-10V please add post-fix "DALI", "-DSI" or "-1-10V" respectively.

OPAL - Opal diffuser - please add post-fix code "OP".

EMERGENCY - integrated emergency is not possible - please use remote dedicated units.

ELEGANTA SERIES

fluorescent - dimmable



PENDANT SUSPENSION LUMINAIRES

product pages start page 73

retail & leisure

PENDANT AMBIENT - T5

T5 - 2x24W+ Page 75



CAMEO SQUARE

T5 - 2+2x54/39W Page 75



CAMEO

T5 - 2+2x54/39W Page 74



SEGMENTO

Page 77



HOTEL LOBBY RECEPTION

PENDANT SUSPENSION

T5 - 2x80W Page 83



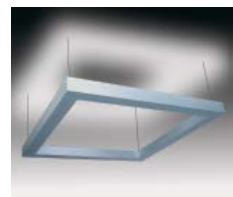
CLASSIC frame - prismatic

T5 - 6x54W Page 83



CLASSICA frame - opal

T5 - 4x54W Page 79



ELEGANTA frame - indirect

T5 - 4x54W Page 79



ELEGANTA frame - direct

TC-L - 4x55W Page 87



QUADINI

Page 85



CONFERENCE HALLS

Page 81



COMMERCIAL OFFICES

Page 88



CORRIDORS

PENDANT SUSPENSION LUMINAIRES

retail & leisure

product pages start page 73

CONTEMPORARY

Page 91



XPEDIA

T5 - 3x24W

Page 91



ATRIA

Page 90



STAIRWELLS

LINEAR

Page 67



XICATA - ROTATOR 2

T5 - 2x54W

Page 103



AMBIENTALE

LED - 20W/m

LED

Page 93



VELA PUNTI

LED / CDM-T

option LED

Page 95



RETAIL SHOWROOMS

SPOTS

Page 96



PUNTO VENDI series

LED / CDM-T

LED option

Page 97



PUNTO VENDI series

LED / CDM-T

LED option

Page 97



PUNTO VENDI series

LED / CDM-T

LED option

Page 99



SALUTO

LED / CDM-T

LED option

Page 101



ORBITO 5

LED / CDM-T

LED option

Page 87

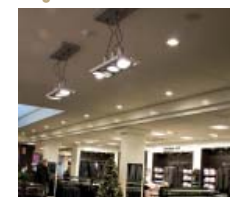


QUADINI - SPOTS

T5 - 4x24W

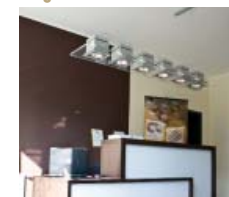
LED option

Page 96



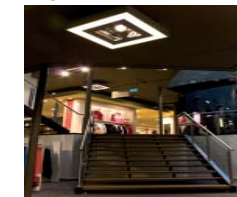
RETAIL MERCHANDISE

Page 72



RECEPTION AREAS

Page 89



SHOPPING MALLS